

IP Panic Button

Installer's Guide



Getting Started

This step-by-step guide will help you install your Wahsega IP Panic Button.

What's in the Box

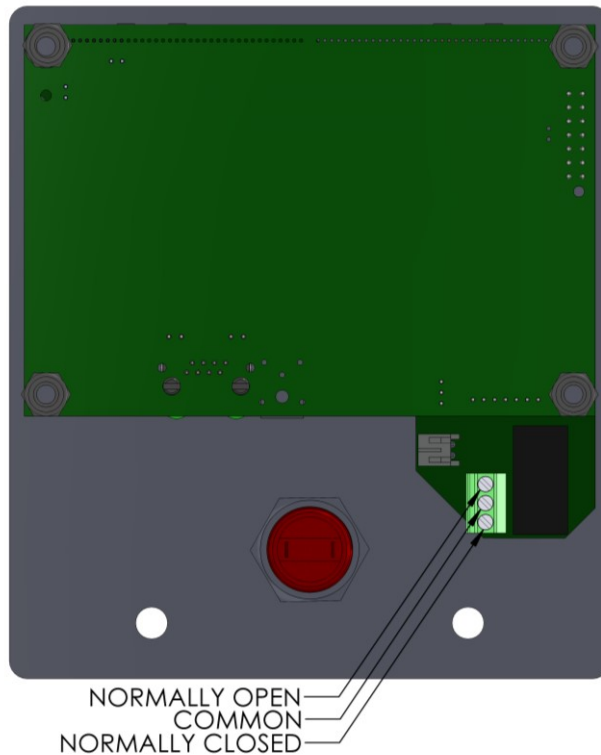


- **IP Panic Button assembly and mounting bracket**
- **Mounting hardware**
 - (2) #6-32 x 3/4" Phillips screws, for surface mounting

What You Will Need

- **PoE power**
 - Standards compliant (IEEE 802.3af) POE switch
- **Remote communication point**
 - SIP server (such as Wahsega PICS)
or
 - Peer-to-peer device to call
- **Network cable**
 - Cat5e or Cat6, max 100m
- **Screwdrivers**
 - Small flat head screwdriver
 - Phillips head screwdriver

Class II Connection Wiring



Relay

The IP Panic Button has an integrated Form C relay (SPDT), used to connect and control a door lock, strobe, or other relay-controlled device. Its contacts are rated for 30VDC or 270VAC at 3A.

If your relay is Normally Closed, connect 18-22AWG wires from your device to Normally Closed (**RLY NC**) and Common (**RLY COM**).

If your relay is Normally Open, connect 18-22AWG wires from your device to Normally Open (**RLY NO**) and Common (**RLY COM**).

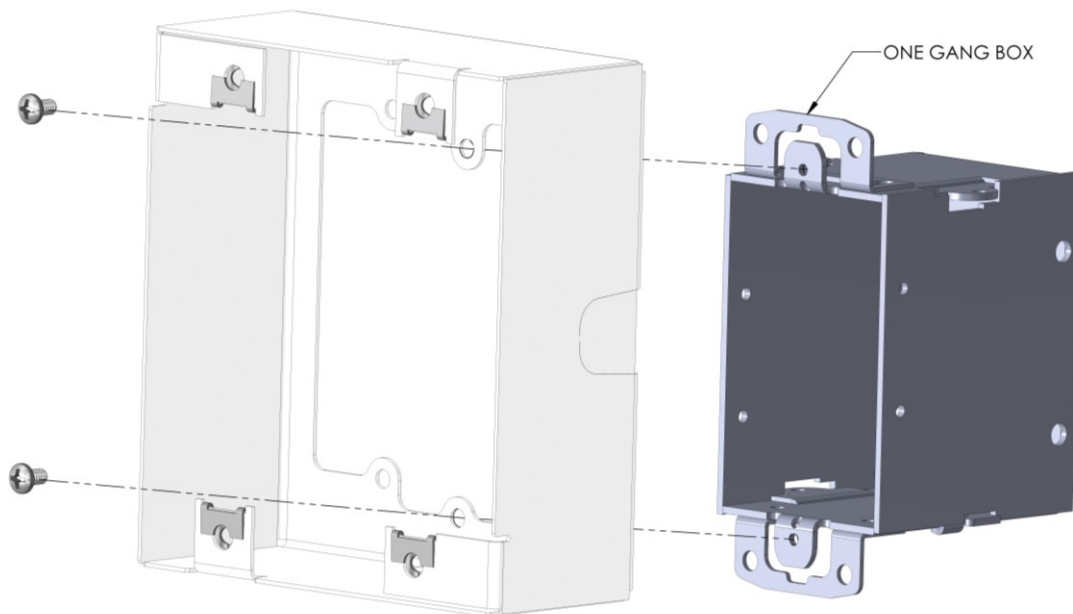
- **RLY NC** – Relay Normally Closed (NC)
- **RLY COM** – Relay Common (COM)
- **RLY NO** – Relay Normally Open (NO)

Surface Mount Installation

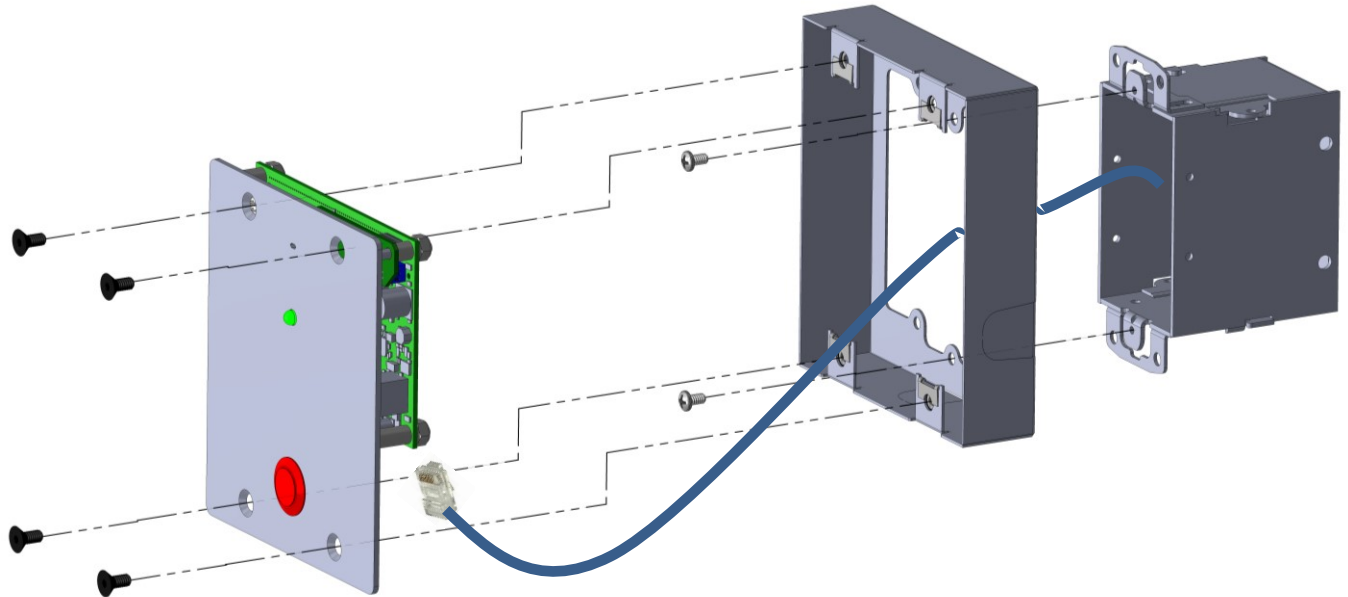
Your IP Panic Button will ship with its mounting bracket attached to the intercom assembly. Begin installation by detaching the intercom assembly from its bracket using a screwdriver to remove the four screws from the front of the faceplate.

Next, mount your bracket to the front of a standard single-gang electrical backbox (preferred), using the (2) included #6-32 screws. If desired, the bracket can instead be mounted to the front of a two-gang backbox, using (4) screws.

If mounting the bracket to a solid surface rather than to an electrical backbox, use the appropriate bolts and anchors for that surface.



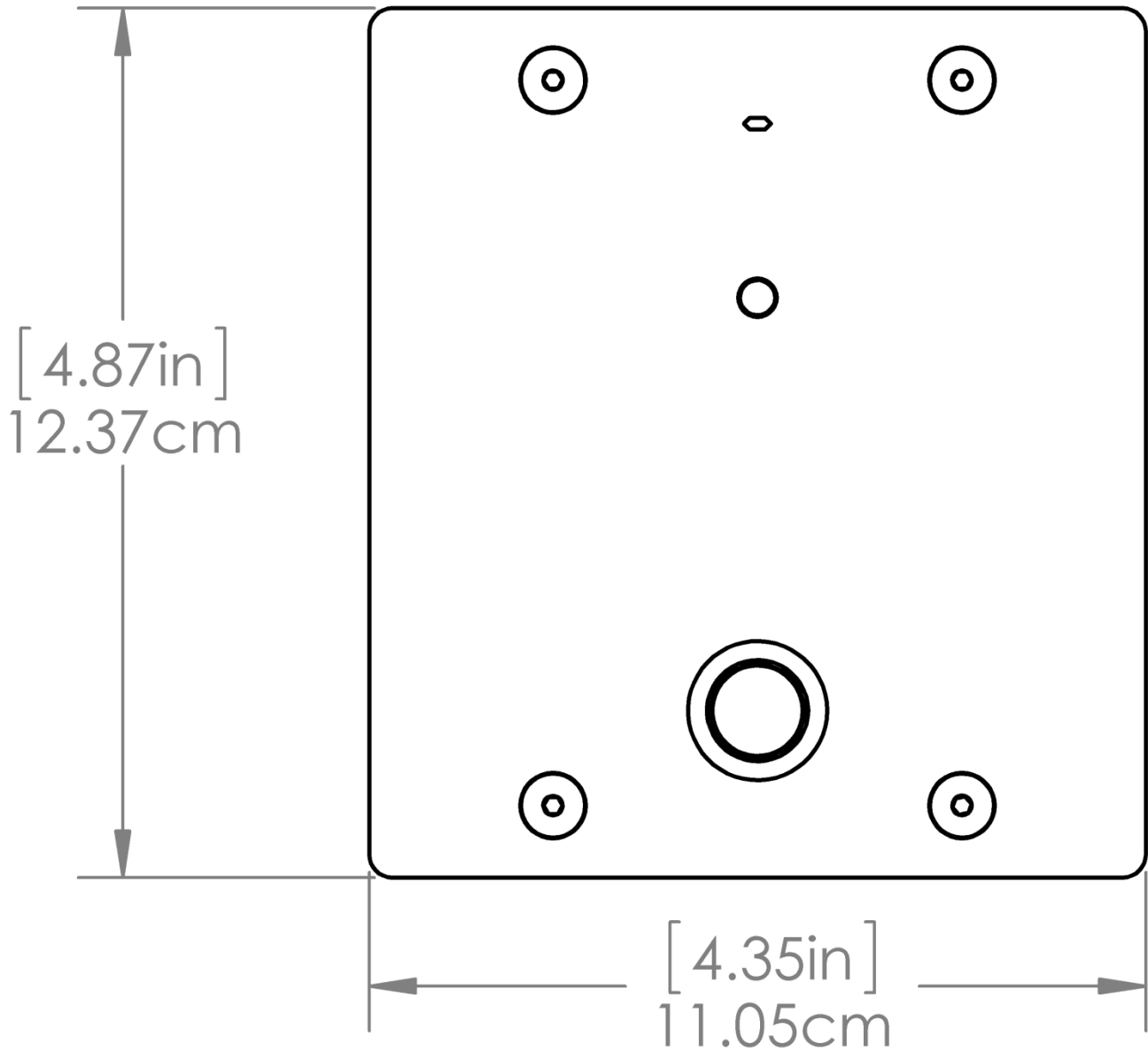
Next, connect the intercom's POE cable and any Class II relay wiring, if needed, for relay.



Before installing the faceplate, be sure to locate and note your device's MAC address, which is printed on a white sticker on the rear of the circuit board.

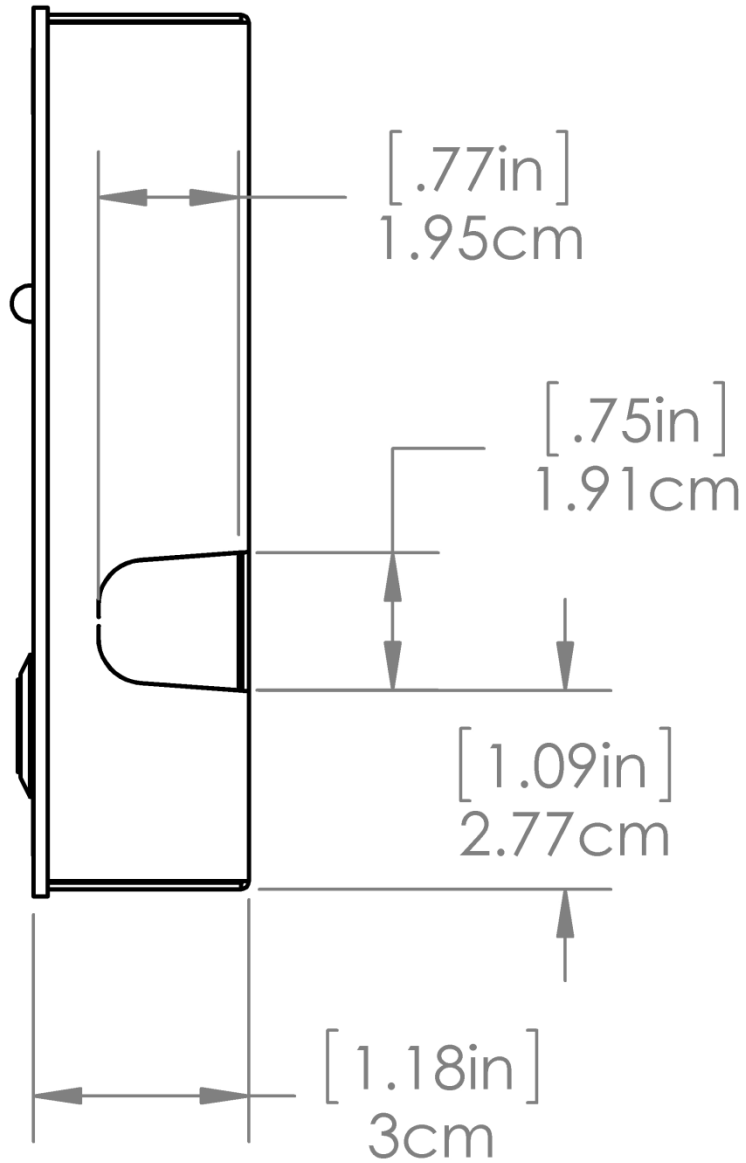
Finally, re-attach the intercom assembly to its bracket using all four screws provided.

Dimensions

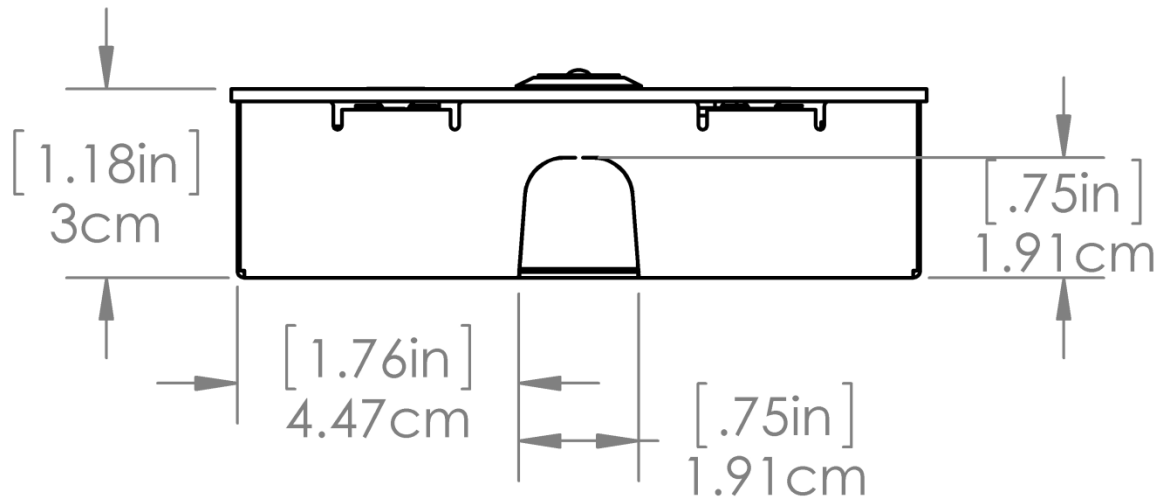


WL-PBM-CAR-W-R
Front view

Images not to scale. Larger versions available at wahsega.com.



WL-PBM-CAR-W-R
Side view



WL-PBM-CAR-W-R
Top view

Standards Compliant

The indoor SIP intercom meets or exceeds the following RF emissions standards.

- FCC 47 CFR Part 15 Subpart B
- Industry Canada ICES-003 Issue 5
- Cet appareil numérique de la classe B est conforme à la norme ICES-003 du Canada.

This product is designed & manufactured in the USA.

- ROHS Compliant
- Temperature Rating -40C +60C.



IP Panic Button

WL-PBM-CAR-W-R