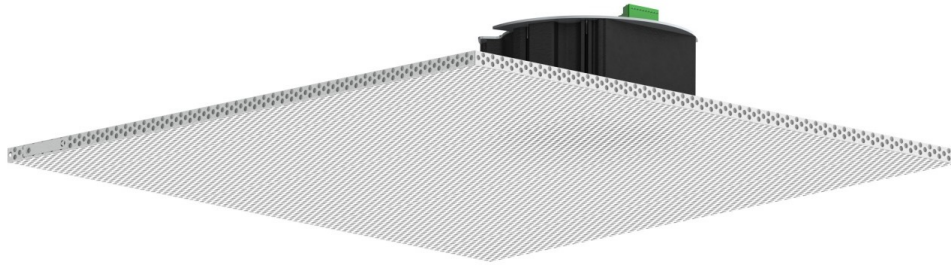


Carina 2x2 IP Ceiling Speaker



Description

The Carina 2x2 IP Ceiling Speaker receives and plays audio broadcasts from the Carina Event Manager via multicast and can also place and answer two-way SIP calls using an IP PBX such as Wahsega's Paging Intercom Server (PICS).

The Carina 2x2 IP Ceiling Speaker works with standard call buttons or the Wahsega Call Button. Advanced functionality can reduce the number of false alarms from that call button, as a brief button press places a SIP call to one preconfigured number—such as the front office—while a longer press-and-hold will call a second preconfigured number, such as a security desk.

An optional room sound reinforcement panel allows users to play audio from a local source such as a computer or smartphone. Incoming broadcasts and calls mute the local audio, making sure users never miss an alert or announcement.

The Carina 2x2 Ceiling Speaker also has the ability to drive a second, independent and lower-cost Wahsega speaker up to 20 meters away via Cat5e or Cat6 cable. For larger classrooms where a second speaker is needed, the Wahsega Extension Speaker (WL-SPKR-xx-A) can be used to increase audio coverage without the need for a second PoE homerun. Alternately, the Carina 2x2 IP Ceiling Speaker can be used in conjunction with the Wahsega Second Room Speaker (WL-SPKR-xx-2R) for independent control of two separate rooms, using only one PoE port and cable homerun.

The Carina Event Manager automatically discovers and registers the Carina 2x2 IP Ceiling Speaker at startup, and all programming and configuration can be handled individually or in bulk through the Carina Event Manager dashboard. This greatly simplifies the installation process and makes it easy to manage the system once installed.

With simple installation and advanced functionality, the Carina 2x2 IP Ceiling Speaker is perfect for education, healthcare, industrial and commercial deployments.

Job Name: **Model Numbers:** **Date:**

Location: **Notes:**

Features

- Able to drive second Wahsega classroom speaker up to 20m away via Cat5e or Cat6
- Dual registration: SIP and Carina
- PoE 802.3af enabled (Power-over-Ethernet)
- Industry-leading low standby power
- Fully configurable via Carina Event Manger
- Auto-discovery on the Wahsega Carina Event Manager
- QR code label for easy MAC address ID
- Simple 2x2 grid lay-in ceiling installation
- Standard earthquake tabs for stability
- Integrated status LED
- Integrated microphone
- Two onboard relays for door control
- Compatible with standard call buttons
- Advanced call button functionality to reduce false alarms
- Web-based mic and speaker volume control
- RJ45 connections for simplified installation of second speaker and remote sound reinforcement faceplate
- Available sound reinforcement input wallplate

Specifications

- Ethernet: 10/100 Mbps
- Power Input: PoE 802.3af
- Standby power: <2 Watts
- Protocol: SIP RFC 3261 compatible
- Audio Codecs: 16-bit PCM (uncompressed), u-law (G.711u), a-law (G.711a), G.722, G.729
- Audio Sampling: 8 kHz, 16 kHz, or 32 kHz
- Speaker Drive Capabilities: 8W (5W per speaker when driving two speakers)
- Speaker Impedance: 8Ω
- Speaker Sensitivity: 96dB 1W/0.5M SPL
- Coverage Angle: 120° / 4 kHz
- Dry Contact Relay Rating: 2A min, 250V AC, 24V DC
- Max PoE Cable Length: 100m (per standard) PoE 10/100 cable length
- Max Auxiliary Speaker Cable Length (Cat5e or Cat6): 20m
- Temperature Range: -40°C to +60°C
- Dimensions: 24" x 24" x 4.44"
- Construction: 24-gauge steel housing with white polyester powdercoat paint
- Options: Remote Sound Reinforcement Wallplate, Wahsega Auxiliary Speaker
- Warranty: 2 years limited

Job Name: **Model Numbers:** **Date:**

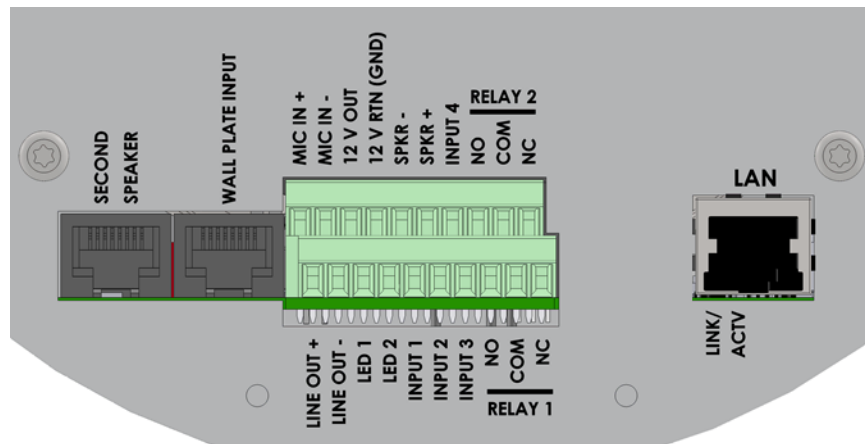
Location: **Notes:**

Model Numbers

WL-SPKR-22-CAR

Wahsega Labs	Speaker	Mount	Protocol
WL	SPKR	22	CAR
Wahsega Labs	Speaker	22 = 2x2 Lay-in SMT = Surface Mount	CAR = Carina INF = InformaCast

Connections



Installation

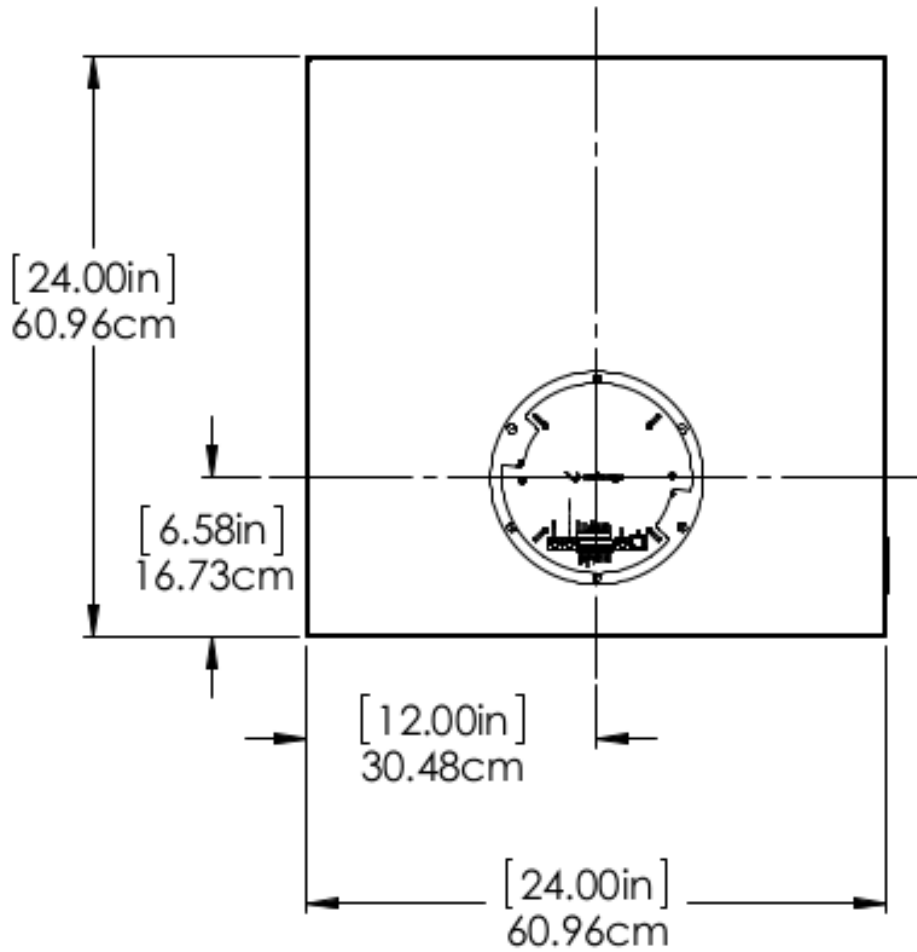
Standard 2x2 lay-in mounting with earthquake tabs for added stability. Power supplied via Power-over-Ethernet (PoE) 802.3af.

Job Name: Model Numbers: Date:

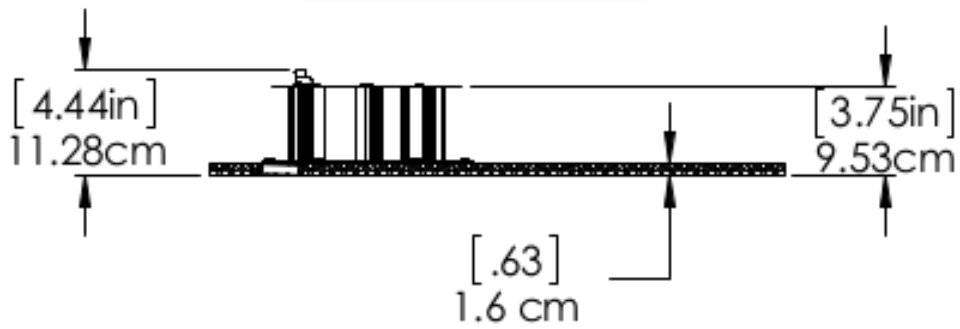
Location: Notes:

Dimensions

Length and Width



Ceiling Depth



Job Name: Model Numbers: Date:

Location: Notes: